

# **PARTS CATALOG**

## **Finisher-U1**

**Canon**

**Oct 12 2005**



## **PREFACE**

This Parts Catalog contains listings of parts used

Diagrams are provided with the listings to aid the service technician in identifying clearly, the item to be ordered.

Whenever ordering parts, consult this Parts Catalog for all of the information pertaining to each item. Be sure to include, in the Parts Request, the full item description, the item part number, and the quantity.

***COPYRIGHT (C) 1999 CANON INC.***

Use of this manual should be strictly supervised to avoid disclosure of confidential information.



# Contents

## NUMERICAL INDEX

Finisher-U1 .....	1-1
-------------------	-----

## Finisher-U1

QA	ASSEMBLY LOCATION DIAGRAM .....	2-1
Q01	PACKING KIT .....	2-3
Q10	EXTERNAL .....	2-5
Q11	INTERNAL COMPONENTS .....	2-7
Q20	STACK TRAY ASSEMBLY .....	2-9
Q21	DELIVERY DRIVE UNIT .....	2-12
Q22	STACK TRAY LIFT ASSEMBLY .....	2-15
Q30	FEEDER ASSEMBLY .....	2-17
Q90	FINISHER CONTROLLER PCB ASS'Y .....	2-20



# NUMERICAL INDEX

## Finisher-U1

PARTS NUMBER	FIGURE & KEY NO.	PARTS NUMBER	FIGURE & KEY NO.	PARTS NUMBER	FIGURE & KEY NO.
4A3-1042-000	Q21 - 1	4A3-1635-000	Q20 - 11	4S3-0109-000	Q30 - 29
4A3-1043-000	Q21 - 2	4A3-1639-000	Q20 - 30	4S3-0110-000	Q30 - 30
4A3-1044-000	Q11 - 20	4A3-1873-000	Q10 - 16	4S3-0111-000	Q30 - 34
4A3-1045-000	Q11 - 1	4A3-1879-000	Q20 - 6	4S3-0112-000	Q30 - 35
4A3-1047-000	Q11 - 10	4A3-1884-000	Q20 - 35	4S3-0119-000	Q20 - 15
4A3-1048-000	Q11 - 11	4A3-1892-000	Q01 - 1	4S3-0127-000	Q20 - 19
4A3-1049-000	Q11 - 12	4A3-1898-000	Q20 - 7	4S3-0128-000	Q20 - 20
4A3-1050-000	Q11 - 13	4A3-1900-000	Q20 - 32	4S3-0129-000	Q20 - 21
4A3-1051-000	Q11 - 14	4A3-1901-000	Q11 - 24	4S3-0130-000	Q20 - 22
4A3-1053-000	Q21 - 3	4A3-1902-000	Q10 - 3	4S3-1024-000	Q11 - 17
4A3-1055-000	Q11 - 4	4A3-1903-000	Q10 - 1	4S3-1024-000	Q20 - 16
4A3-1056-000	Q21 - 4	4A3-1907-000	Q11 - 25	4S3-1024-000	Q21 - 20
4A3-1057-000	Q21 - 5	4A3-1908-000	Q10 - 12	4S3-1024-000	Q30 - 31
4A3-1059-000	Q21 - 6	4A3-1959-000	Q22 - 4	4S3-1025-000	Q30 - 36
4A3-1060-000	Q21 - 7	4A3-1961-000	Q01 - 2	4S3-2063-000	Q21 - 21
4A3-1061-000	Q11 - 5	4A3-1962-000	Q01 - 5	4S3-2064-000	Q11 - 9
4A3-1062-000	Q11 - 15	4A3-1963-000	Q01 - 3	4S3-2065-000	Q11 - 3
4A3-1063-000	Q11 - 16	4A3-1965-000	Q10 - 7	4S3-2066-000	Q21 - 22
4A3-1064-000	Q21 - 8	4A3-1968-000	Q01 - 4	4S3-2067-000	Q21 - 23
4A3-1068-000	Q11 - 2	4A3-2059-000	Q10 - 9	4S3-2068-000	Q21 - 31
4A3-1074-000	Q11 - 21	4A3-2060-000	Q10 - 4	4S3-2080-000	Q20 - 1
4A3-1075-000	Q11 - 6	4A3-2061-000	Q30 - 18	4S3-2083-000	Q20 - 13
4A3-1077-000	Q21 - 9	4A3-2062-000	Q30 - 19	4S3-2084-000	Q20 - 23
4A3-1078-000	Q10 - 18	4A3-2063-000	Q10 - 15	4S3-3058-000	Q20 - 14
4A3-1080-000	Q11 - 8	4A3-2066-000	Q30 - 13	4S3-6021-000	Q20 - 24
4A3-1081-000	Q10 - 10	4A3-2067-000	Q30 - 2	FC5-4424-000	Q21 - 24
4A3-1083-000	Q10 - 11	4A3-2068-000	Q30 - 1	FC5-4424-000	Q30 - 10
4A3-1085-000	Q21 - 10	4F3-0243-000	Q11 - 7	FC5-4425-000	Q11 - 18
4A3-1107-000	Q30 - 16	4F3-0325-000	Q10 - 8	FC5-4425-000	Q21 - 25
4A3-1109-000	Q30 - 17	4F3-0417-000	Q21 - 12	FC5-4425-000	Q30 - 32
4A3-1110-000	Q30 - 4	4F3-0418-000	Q30 - 27	FC5-6022-000	Q21 - 11
4A3-1116-000	Q30 - 22	4F3-0419-000	Q10 - 2	FC5-6022-000	Q30 - 14
4A3-1117-000	Q30 - 5	4F3-0886-000	Q30 - 12	FF6-1937-000	Q10 - 5
4A3-1118-000	Q30 - 6	4G3-0478-000	Q20 - 12	FF6-1938-000	Q10 - 6
4A3-1119-000	Q30 - 20	4G3-0480-000	Q10 - 19	FS5-1952-000	Q11 - 19
4A3-1120-000	Q30 - 7	4G3-0572-000	Q20 - 28	FS5-1952-000	Q30 - 33
4A3-1121-000	Q30 - 8	4G3-0573-000	Q20 - 31	FS5-9714-000	Q21 - 26
4A3-1123-000	Q30 - 21	4G3-0796-000	Q21 - 13	FS5-9715-000	Q10 - 17
4A3-1125-000	Q30 - 3	4G3-0797-000	Q20 - 2	FS5-9715-000	Q11 - 22
4A3-1127-000	Q30 - 9	4G3-0798-000	Q10 - 13	NPN	Q10 -
4A3-1129-000	Q30 - 26	4G3-0799-000	Q20 - 5	NPN	Q11 -
4A3-1131-000	Q30 - 23	4G3-0800-000	Q21 - 14	NPN	Q20 -
4A3-1133-000	Q30 - 24	4G3-0801-000	Q30 - 15	NPN	Q21 -
4A3-1170-000	Q22 - 1	4G3-0806-000	Q90 - 1	NPN	Q22 -
4A3-1174-000	Q20 - 3	4G3-0862-000	Q01 - 1	NPN	Q30 -
4A3-1175-000	Q20 - 4	4H3-0084-000	Q21 - 15	NPN	Q90 -
4A3-1181-000	Q20 - 34	4H3-0085-000	Q30 - 28	VT2-5154-004	Q90 - 2
4A3-1210-000	Q20 - 29	4H3-0086-000	Q21 - 16	WG8-5696-000	Q20 - 18
4A3-1257-000	Q10 - 14	4K1-4055-000	Q20 - 17	WG8-5696-000	Q21 - 27
4A3-1625-000	Q20 - 8	4S3-0099-000	Q21 - 17	WG8-5696-000	Q22 - 3
4A3-1631-000	Q20 - 9	4S3-0100-000	Q21 - 18	WG8-5696-000	Q30 - 25
4A3-1632-000	Q20 - 10	4S3-0101-000	Q21 - 19	XA9-0862-000	Q11 - 23

# NUMERICAL INDEX

## Finisher-U1

PARTS NUMBER	FIGURE & KEY NO.	PARTS NUMBER	FIGURE & KEY NO.	PARTS NUMBER	FIGURE & KEY NO.
XA9-1031-000	Q22 - 5				
XA9-1386-000	Q10 - 20				
XA9-1386-000	Q11 - 27				
XA9-1386-000	Q20 - 33				
XA9-1386-000	Q21 - 28				
XA9-1386-000	Q22 - 2				
XB1-1301-005	Q20 - 503				
XB1-2300-405	Q10 - 502				
XB1-2300-405	Q20 - 506				
XB1-2300-405	Q21 - 501				
XB1-2300-405	Q30 - 502				
XB1-2300-405	Q90 - 501				
XB2-7300-605	Q01 - 502				
XB2-8300-605	Q21 - 502				
XB3-6300-800	Q11 - 501				
XB4-5401-205	Q10 - 501				
XB4-5401-205	Q22 - 501				
XB4-5401-205	Q30 - 501				
XB4-7401-207	Q11 - 502				
XB6-7300-405	Q20 - 507				
XB6-7300-605	Q01 - 501				
XD1-1106-232	Q20 - 504				
XD2-1100-402	Q20 - 501				
XD3-2200-102	Q20 - 502				
XD3-2200-102	Q30 - 503				
XF2-1103-840	Q20 - 25				
XF2-1606-335	Q30 - 11				
XF2-1607-135	Q21 - 29				
XF2-1607-235	Q21 - 30				
XF2-3308-160	Q20 - 26				
XG9-0337-000	Q20 - 27				



# Finisher-U1

Finisher-U1

F26-7301-000 KRY

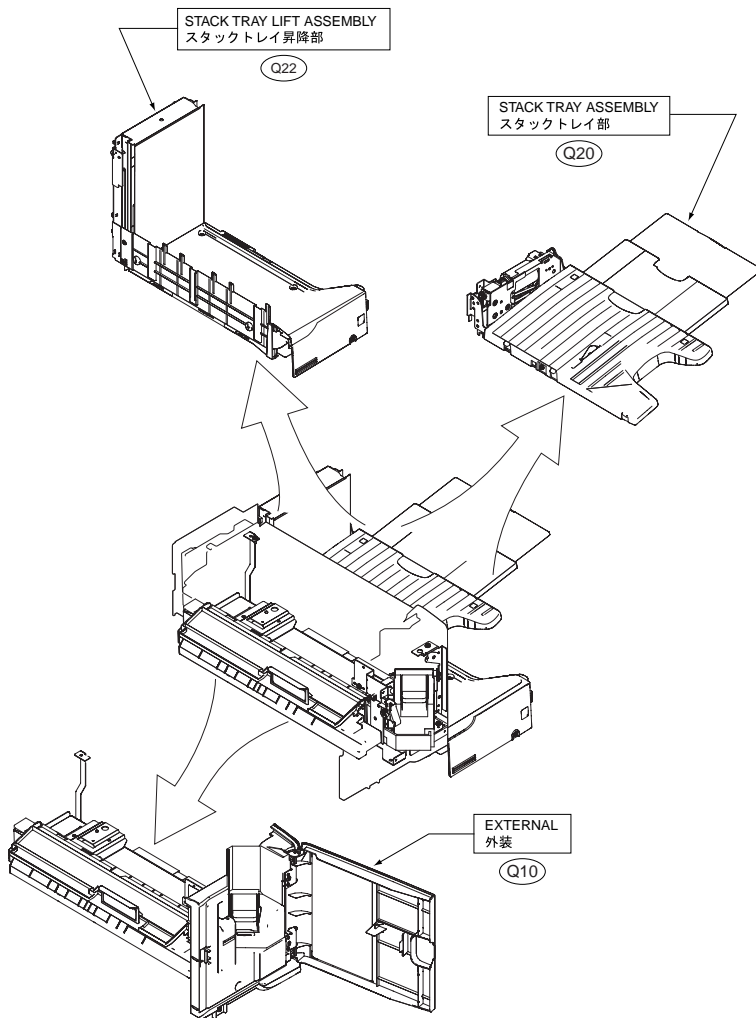


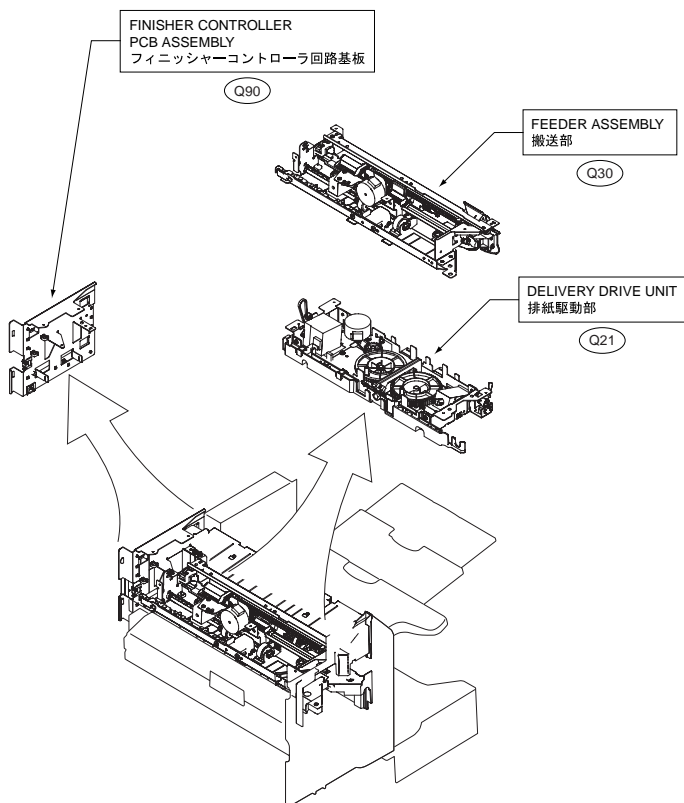
# Contents

QA	ASSEMBLY LOCATION DIAGRAM .....	2-1
Q01	PACKING KIT .....	2-3
Q10	EXTERNAL .....	2-5
Q11	INTERNAL COMPONENTS .....	2-7
Q20	STACK TRAY ASSEMBLY .....	2-9
Q21	DELIVERY DRIVE UNIT .....	2-12
Q22	STACK TRAY LIFT ASSEMBLY .....	2-15
Q30	FEEDER ASSEMBLY .....	2-17
Q90	FINISHER CONTROLLER PCB ASS'Y .....	2-20



# FIGURE QA ASSEMBLY LOCATION DIAGRAM





# FIGURE Q01 PACKING KIT

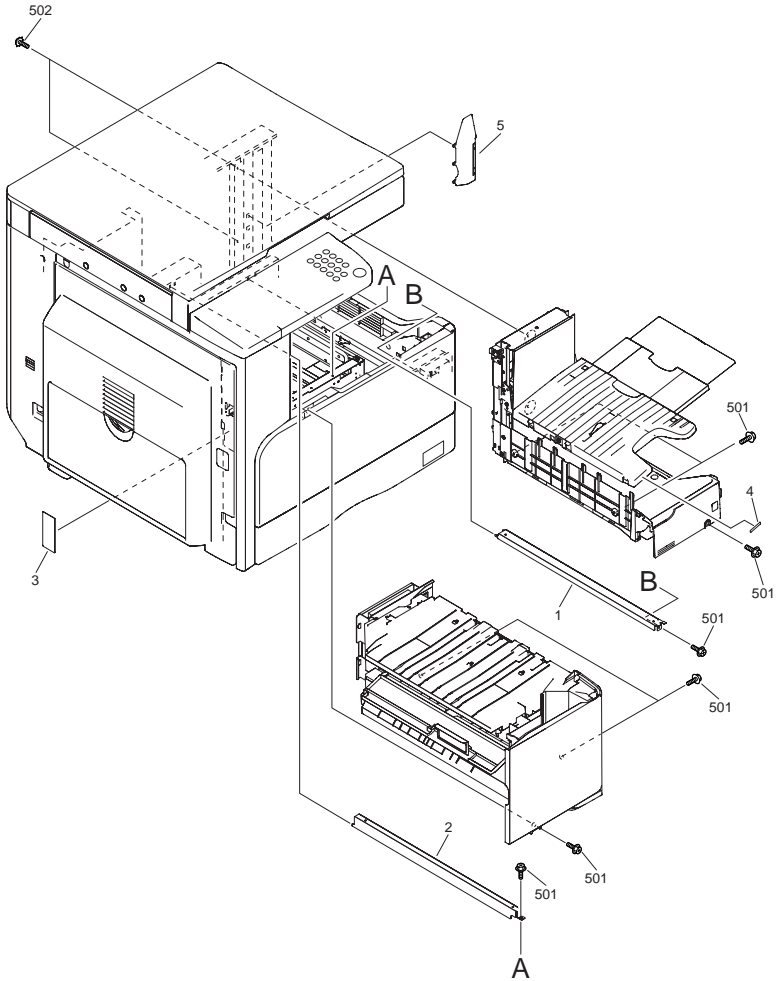


FIGURE & KEY NO.	PARTS NUMBER	RANK	Q'TY	DESCRIPTION	SERIAL NUMBER/REMARKS	SVC
Fig.Q01	4G3-0862-000		1	PACKING KIT		
1	4A3-1892-000		1	RAIL, BOTTOM		
2	4A3-1961-000		1	GUARD, SCANNER		
3	4A3-1963-000		1	LABEL, JAM RRECOVERY1		
4	4A3-1968-000		1	LABEL, TRAY SETTING		
5	4A3-1962-000		1	CABLE, GUARD		
501	XB6-7300-605		8	SCREW, TP, M3X6 (S)		
502	XB2-7300-605		2	SCREW, WWASHER, M3X6		



# FIGURE Q10 EXTERNAL

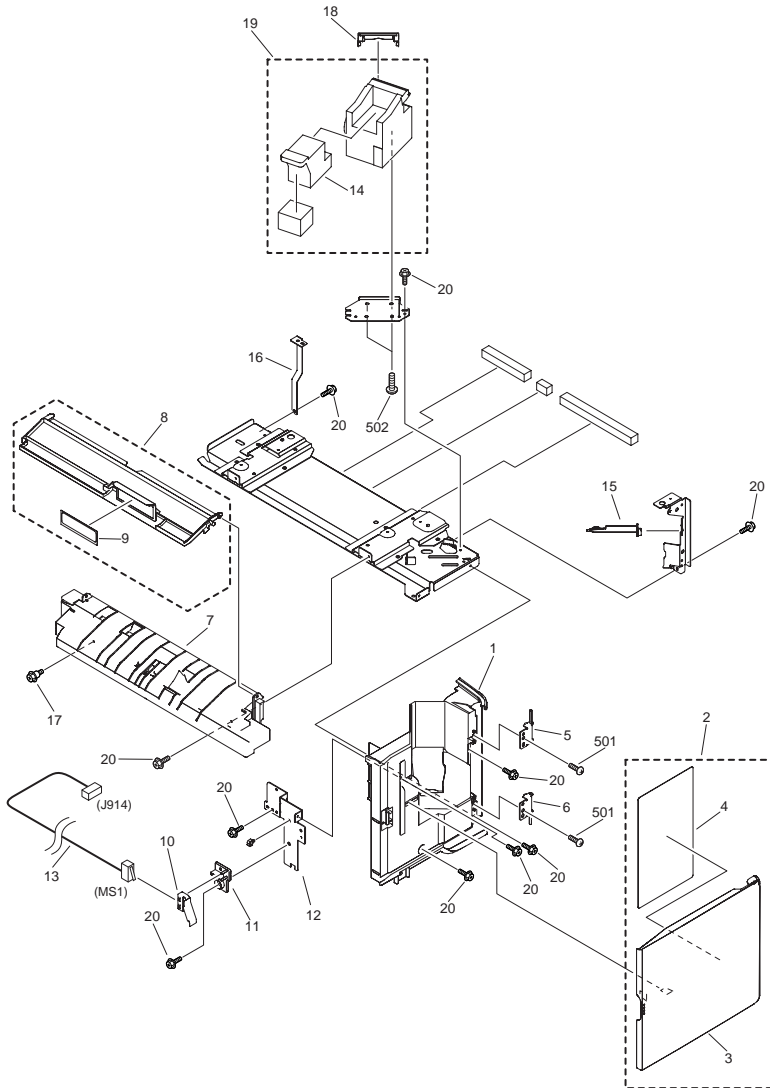


FIGURE & KEY NO.	PARTS NUMBER	R A N K	Q'TY	DESCRIPTION	SERIAL NUMBER/REMARKS	S V C
Fig.Q10	NPN		RF	EXTERNAL		
1	4A3-1903-000		1	COVER, INNER		
2	4F3-0419-000		1	COVER, FRONT		
3	4A3-1902-000		1	COVER, FRONT		
4	4A3-2060-000		1	LABEL, STAPLE OPERATION		
5	FF6-1937-000		1	HINGE, FRONT DOOR, UPPER		
6	FF6-1938-000		1	HINGE, FRONT DOOR, LOWER		
7	4A3-1965-000		1	GUIDE, ENTRANCE, LOWER		
8	4F3-0325-000		1	GUIDE, ENTRANCE, UPPER		
9	4A3-2059-000		1	LABEL, PAPER JAM		
10	4A3-1081-000		1	SPRING, COMPRESSION		
11	4A3-1083-000		1	HOLDER, SWITCH		
12	4A3-1908-000		1	BRACKET, SENSOR		
13	4G3-0798-000		1	CABLE, FRONT COVER SWITCH	MS1 J914	
14	4A3-1257-000		1	CARTRIDGE, STAPLER		
15	4A3-2063-000		1	SHAFT, STAPLE OPEN GUIDE		
16	4A3-1873-000		1	PLATE, JOINT		
17	FS5-9715-000		4	SCREW, STEPPED, M3		
18	4A3-1078-000		1	GUIDE, CLINCH, UPPER		
19	4G3-0480-000		1	STAPLE UNIT		
20	XA9-1386-000		AR	SCREW, RS, M3X8		
501	XB4-5401-205		2	SCREW, P, M4X12		
502	XB1-2300-405		2	SCREW, MACH. BH, M3X4		

# FIGURE Q11 INTERNAL COMPONENTS

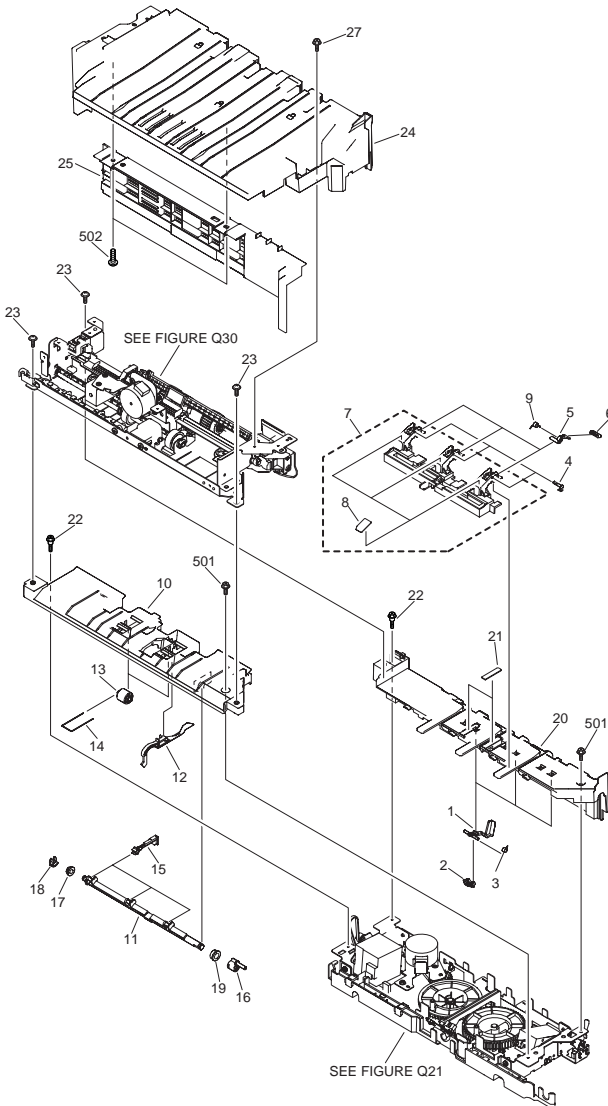


FIGURE & KEY NO.	PARTS NUMBER	R A N K	Q'TY	DESCRIPTION	SERIAL NUMBER/ REMARKS	S V C
Fig.Q11	NPN		RF	INTERNAL COMPONENTS		
1	4A3-1045-000		3	PLATE, RETURN		
2	4A3-1068-000		3	LEVER, RETURN		
3	4S3-2065-000		3	SPRING		
4	4A3-1055-000		3	SHAFT, CLAW		
5	4A3-1061-000		3	CLAW		
6	4A3-1075-000		3	RUBBER, CLAW		
7	4F3-0243-000		1	STACK DELIVERY SLIDER ASS'Y		
8	4A3-1080-000		3	SHEET, STACK DELIVERY GUIDE		
9	4S3-2064-000		3	SPRING		
10	4A3-1047-000		1	GUIDE, LOWER		
11	4A3-1048-000		1	SHAFT, CLAW LEVER		
12	4A3-1049-000		1	FLAG, PAPER FACE SENSING		
13	4A3-1050-000		2	ROLLER		
14	4A3-1051-000		2	SPRING		
15	4A3-1062-000		3	LEVER, CLAW		
16	4A3-1063-000		1	ARM, CLAW LEVER SHAFT		
17	4S3-1024-000		1	BUSHING		
18	FC5-4425-000		1	CLIP		
19	FS5-1952-000		1	BUSHING		
20	4A3-1044-000		1	TRAY, OPERATION		
21	4A3-1074-000		2	SHEET, OPERATION		
22	FS5-9715-000		2	SCREW, STEPPED, M3		
23	XA9-0862-000		3	SCREW, B, M4X8		
24	4A3-1901-000		1	COVER, TOP		
25	4A3-1907-000		1	COVER, TOP, 2		
27	XA9-1386-000		1	SCREW, RS, M3X8		
501	XB3-6300-800		2	SCREW, RS, M3X8		
502	XB4-7401-207		2	SCREW, TAPPING, TRUSS HEAD, M4X12		

# FIGURE Q20 STACK TRAY ASSEMBLY

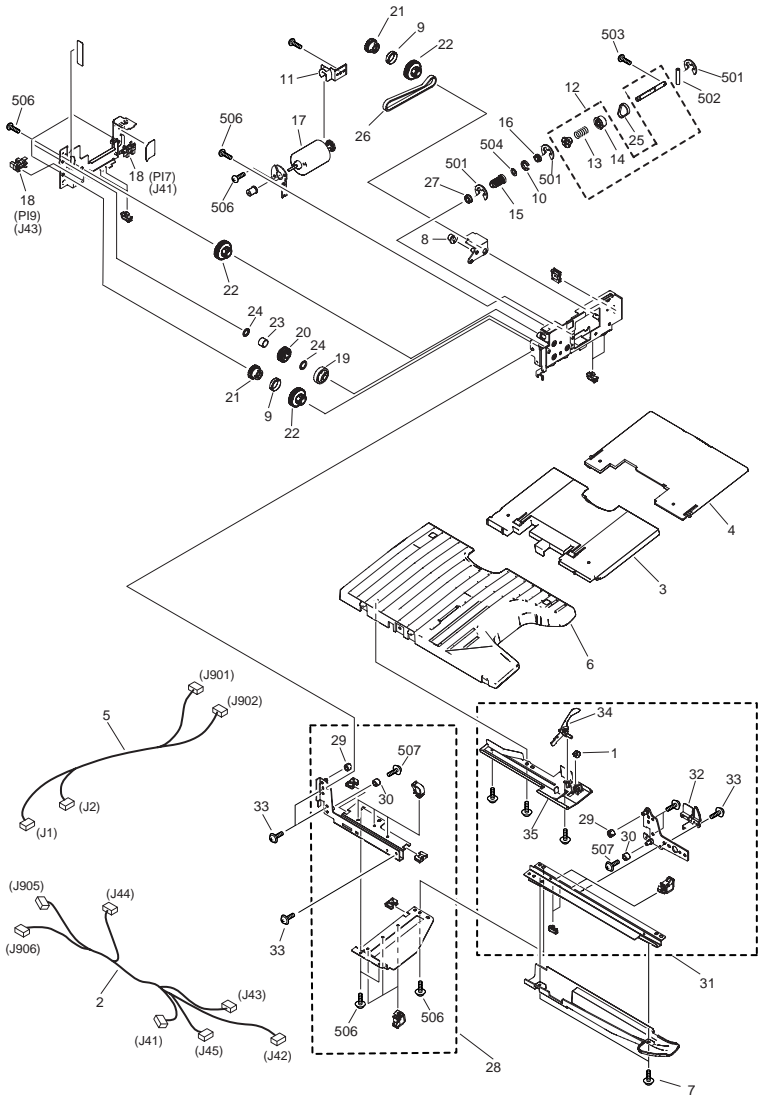


FIGURE & KEY NO.	PARTS NUMBER	R A N K	Q'TY	DESCRIPTION	SERIAL NUMBER/ REMARKS	S V C
Fig.Q20	NPN		RF	STACK TRAY ASSEMBLY		
1	4S3-2080-000		1	SPRING		
2	4G3-0797-000		1	CABLE, MAIN TRAY	J41-45,905,906	
3	4A3-1174-000		1	TRAY, SUB		
4	4A3-1175-000		1	TRAY, SUB		
5	4G3-0799-000		1	CABLE, MWIN INTERFACE	J1,2,901,902	
6	4A3-1879-000		1	TRAY, MAIN		
7	4A3-1898-000		1	COVER, TRAY, LOWER		
8	4A3-1625-000		1	TENSIONER, BELT		
9	4A3-1631-000		2	COLLAR		
10	4A3-1632-000		1	COLLAR		
11	4A3-1635-000		1	COLLAR, ,ENCODER		
12	4G3-0478-000		1	SHAFT, WORM GEAR		
13	4S3-2083-000		1	SPRING		
14	4S3-3058-000		1	PULLEY, 28T		
15	4S3-0119-000		1	GEAR,WORM		
16	4S3-1024-000		1	BUSHING		
17	4K1-4055-000		1	MOTOR, DC		
18	WG8-5696-000		2	PHOTO INTERRUPTER,TLP1243	PI7,9 J41,43	
19	4S3-0127-000		1	WORM, WHEEL		
20	4S3-0128-000		1	GEAR, 27T		
21	4S3-0129-000		2	GEAR, 20T		
22	4S3-0130-000		3	PULLEY, 36T/GEAR, 18T		
23	4S3-2084-000		1	SPRING		
24	4S3-6021-000		1	WASHER		
25	XF2-1103-840		1	BELT, TIMING		
26	XF2-3308-160		1	BELT, TIMING		
27	XG9-0337-000		1	BEARING, BALL		
28	4G3-0572-000		1	TRAY SIDE PLATE UNIT (L)		
29	4A3-1210-000		2	ROLLER		
30	4A3-1639-000		2	ROLLER		
31	4G3-0573-000		1	TRAY, SIDE PLATE UNIT(R)		

FIGURE & KEY NO.	PARTS NUMBER	RANK	Q'TY	DESCRIPTION	SERIAL NUMBER/REMARKS	SVC
32	4A3-1900-000		1	HOLDER, HARNESS		
33	XA9-1386-000		7	SCREW, RS, M3X8		
34	4A3-1181-000		1	FLAG, TRAY SENSOR		
35	4A3-1884-000		1	HOLDER, SENSOR		
501	XD2-1100-402		3	RETAINING RING(E-TYPE)		
502	XD3-2200-102		2	PIN, PARALLEL		
503	XB1-1301-005		1	SCREW, PH3X10(S)		
504	XD1-1106-232		1	WASHER,COP		
506	XB1-2300-405		10	SCREW, MACH.BH, M3X4		
507	XB6-7300-405		2	SCREW, TP, M3X4		

# FIGURE Q21 DELIVERY DRIVE UNIT

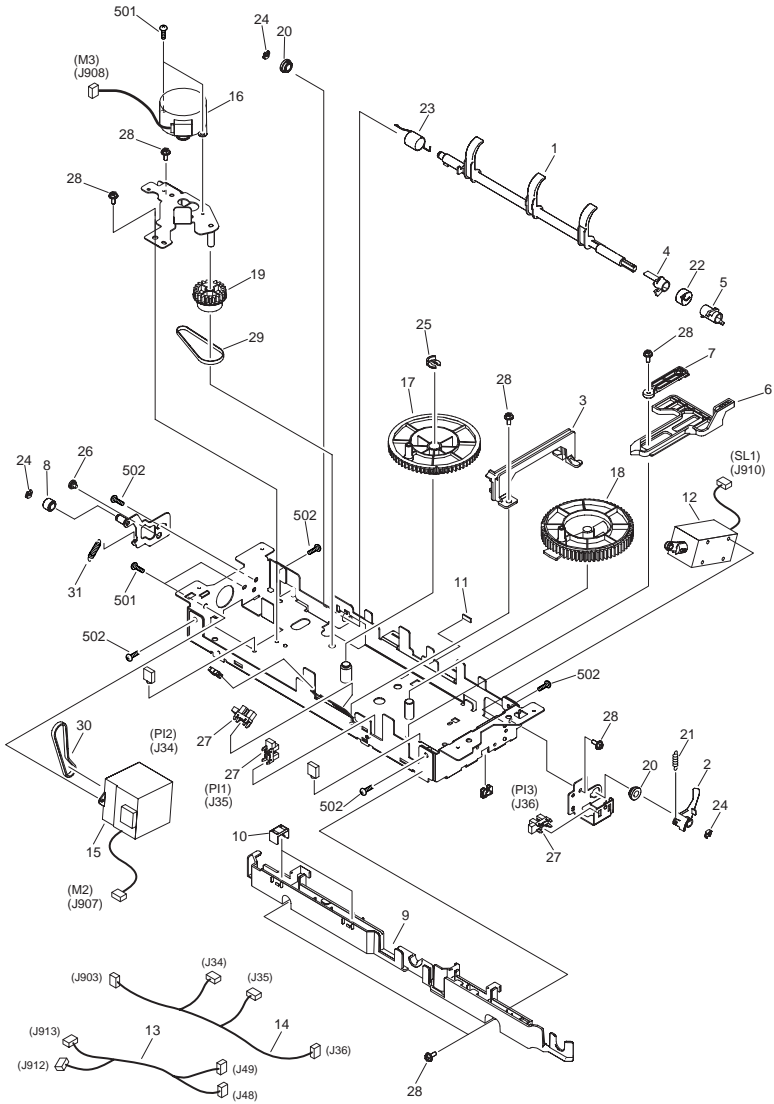




FIGURE & KEY NO.	PARTS NUMBER	R A N K	Q'TY	DESCRIPTION	SERIAL NUMBER/ REMARKS	S V C
Fig.Q21	NPN		RF	DELIVERY DRIVE UNIT		
1	4A3-1042-000		1	RETAINER, TRAY PAPER		
2	4A3-1043-000		1	FLAG, PAPER FACE SENSING		
3	4A3-1053-000		1	RAIL, SLIDE		
4	4A3-1056-000		1	LEVER, PAPER RETAINER		
5	4A3-1057-000		1	ARM, PAPER RETAINER		
6	4A3-1059-000		1	LEVER, PRESSURE		
7	4A3-1060-000		1	LEVER, FIXING PRESSURE		
8	4A3-1064-000		1	ROLLER		
9	4A3-1077-000		1	GUIDE, STACK DELIVERY CABLE		
10	4A3-1085-000		2	COVER, STACK DELIVERY CABLE		
11	FC5-6022-000		1	SHEET, PAPER RETAINER SILENCER		
12	4F3-0417-000		1	SOLENOID UNIT	SL1 J910	
13	4G3-0796-000		1	CABLE, STAPLER	J48,49,912,913	
14	4G3-0800-000		1	CABLE, PROCESS TRAY SENSOR	J34,35,36,903	
15	4H3-0084-000		1	MOTOR, STEPPING	M2 J907	
16	4H3-0086-000		1	MOTOR, STEPPING	M3 J908	
17	4S3-0099-000		1	GEAR, 64T		
18	4S3-0100-000		1	GEAR, 34T		
19	4S3-0101-000		1	GEAR, 21T/36T		
20	4S3-1024-000		2	BUSHING		
21	4S3-2063-000		1	SPRING		
22	4S3-2066-000		1	SPRING		
23	4S3-2067-000		1	SPRING		
24	FC5-4424-000		3	CLIP		
25	FC5-4425-000		1	CLIP		
26	FS5-9714-000		1	SCREW, STEPPED, M3		
27	WG8-5696-000		3	PHOTO INTERRUPTER TLP1243	P11,2,3 J34,35,36	
28	XA9-1386-000		7	SCREW, RS, M3X8		
29	XF2-1607-135		1	BELT, TIMING		
30	XF2-1607-235		1	BELT, TIMING		
31	4S3-2068-000		1	SPRING		

FIGURE & KEY NO.	PARTS NUMBER	R A N K	Q'TY	DESCRIPTION	SERIAL NUMBER/ REMARKS	S V C
501	XB1-2300-405		4	SCREW, MACH.BH, M3X4		
502	XB2-8300-605		5	SCREW, WWASHER, M3X6		

# FIGURE Q22 STACK TRAY LIFT ASSEMBLY

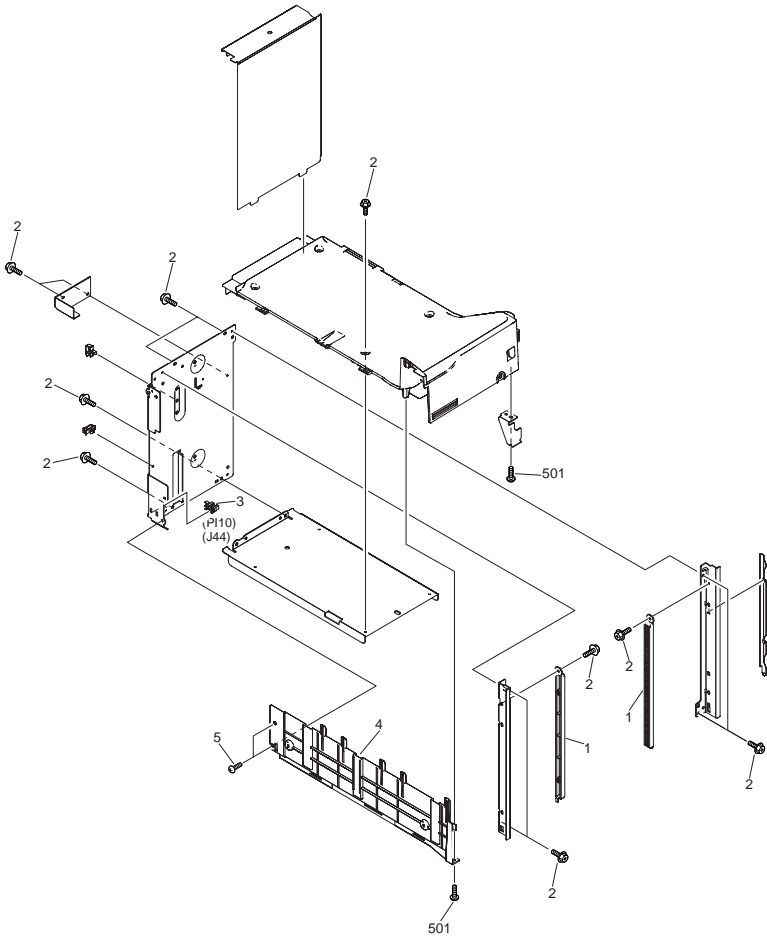


FIGURE & KEY NO.	PARTS NUMBER	RANK	Q'TY	DESCRIPTION	SERIAL NUMBER/REMARKS	SVC
Fig.Q22	NPN		RF	STACK TRAY LIFT ASSEMBLY		
1	4A3-1170-000		2	RACK, TRAY		
2	XA9-1386-000		16	SCREW, RS, M3X8		
3	WG8-5696-000		1	PHOTO INTERRUPTER, TLP1243	PI10 J44	
4	4A3-1959-000		1	COVER,BOTTOM, 2		
5	XA9-1031-000		2	SCREW, MACH. TRUSS HEAD, M4X6		
501	XB4-5401-205		2	SCREW, P, M4X12		

# FIGURE Q30 FEEDER ASSEMBLY

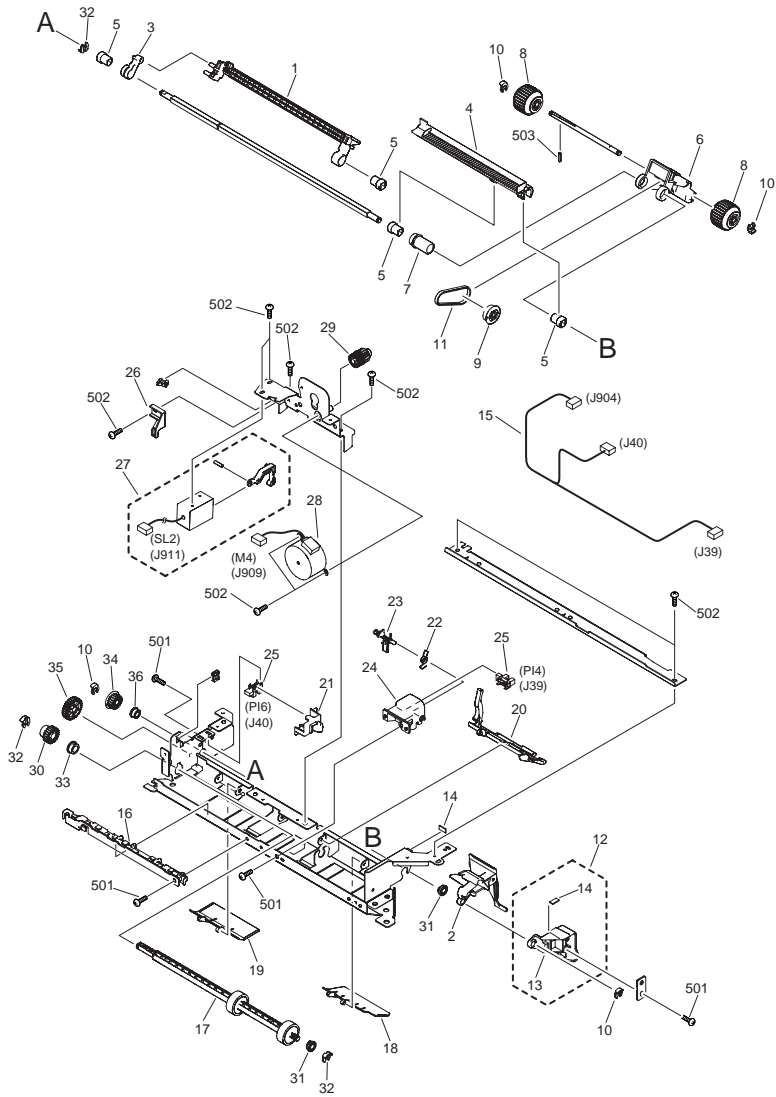


FIGURE & KEY NO.	PARTS NUMBER	RANK	Q'TY	DESCRIPTION	SERIAL NUMBER/REMARKS	SVC
Fig.Q30	NPN		RF	FEEDER ASSEMBLY		
1	4A3-2068-000		1	LEVER, CR ESTRANGEMENT		
2	4A3-2067-000		1	RETAINER, PAPER, C		
3	4A3-1125-000		1	HOLDER, LEVER OFFSET ROLLER		
4	4A3-1110-000		1	RACK, OFFSET		
5	4A3-1117-000		4	BUSHING		
6	4A3-1118-000		1	HOLDER, OFFSET ROLLERSET		
7	4A3-1120-000		1	PULLEY, 22T		
8	4A3-1121-000		2	ROLLER, OFFSET		
9	4A3-1127-000		1	PULLEY, 30T		
10	FC5-4424-000		4	CLIP		
11	XF2-1606-335		1	BELT, TIMING		
12	4F3-0886-000		1	RETAINER, PAPER		
13	4A3-2066-000		1	RETAINER, TRAY PAPER REAR		
14	FC5-6022-000		2	SHEET, PAPER RETAINER SILENCER		
15	4G3-0801-000		1	CABLE, OFFSET	J39,40,904	
16	4A3-1107-000		1	GUIDE, CABLE		
17	4A3-1109-000		1	ROLLER, PAPER FEEDER		
18	4A3-2061-000		1	GUIDE, SWING PAPER, FRONT		
19	4A3-2062-000		1	GUIDE, SWING PAPER, REAR		
20	4A3-1119-000		1	RETAINER, TRAY PAPER FRONT		
21	4A3-1123-000		1	COVER, OFFSET SENSOR		
22	4A3-1116-000		1	SPRING		
23	4A3-1131-000		1	FLAG, PAPER FEEDER		
24	4A3-1133-000		1	HOLDER, ENTRANCE SENSOR		
25	WG8-5696-000		2	PHOTO INTERRUPTER, TLP1243	PI4,6 J39,40	
26	4A3-1129-000		1	RETAINER, ROLLER		
27	4F3-0418-000		1	SOLENOID UNIT		
28	4H3-0085-000		1	MOTOR, STEPPING	M4 J909	
29	4S3-0109-000		1	GEAR, 14T/30T		
30	4S3-0110-000		1	GEAR, 22T/22T		
31	4S3-1024-000		2	BUSHING		

FIGURE & KEY NO.	PARTS NUMBER	R A N K	Q'TY	DESCRIPTION	SERIAL NUMBER/ REMARKS	S V C
32	FC5-4425-000		3	CLIP		
33	FS5-1952-000		1	BUSHING		
34	4S3-0111-000		1	GEAR, 19T		
35	4S3-0112-000		1	GEAR, 31T		
36	4S3-1025-000		1	BUSHING		
501	XB4-5401-205		4	SCREW, P, M4X12		
502	XB1-2300-405		9	SCREW, MACH. BH, M3X4		
503	XD3-2200-102		1	PIN, PARALLEL		

# FIGURE Q90 FINISHER CONTROLLER PCB ASS'Y

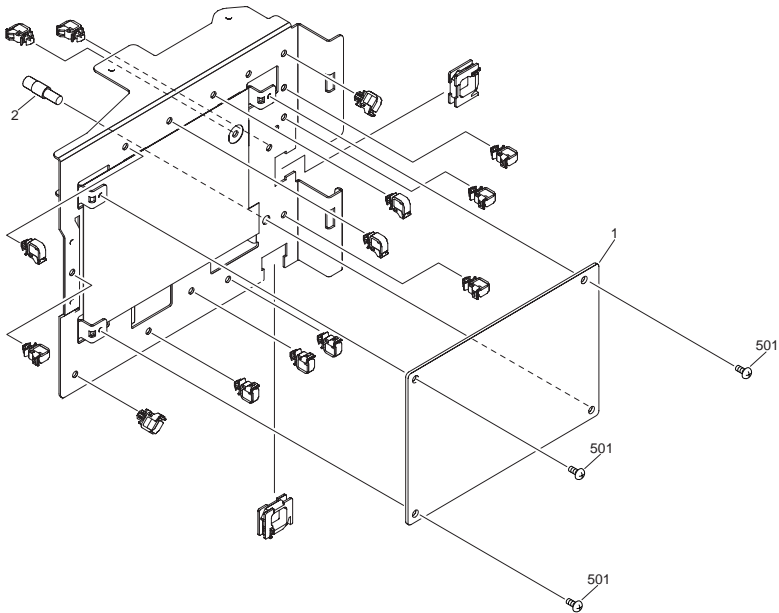




FIGURE & KEY NO.	PARTS NUMBER	RANK	Q'TY	DESCRIPTION	SERIAL NUMBER/REMARKS	SVC
Fig.Q90	NPN		RF	FINISHER CONTROLLER PCB ASS'Y		
1	4G3-0806-000		1	MAIN CONTROLLER PCB ASS'Y		
2	VT2-5154-004		1	SUPPORT, PCB		
501	XB1-2300-405		3	SCREW, MACH.BH, M3X4		



Prepared by  
OIP HFE Promotion Center  
CANON INC.

**Canon**